

Geländerteile aus VA / Ronden, Ankerplatten, Laschen

VA railing components / round plates, anchor plates, brackets



Bodenanker I floor anchor

mit Verbindungshülse, Korn 240
with expansion sleeve, finish 240

Art- Nr. art. no.	Material material	Rohr \varnothing tube			Bohrung borehole
10 50 07 00	A2	42,4 x 2,0	100	6	11
10 55 42 00	A4	42,4 x 2,0	100	6	11

Schweißbronde I welding plates

für Rundrohr, roh
for round tube, raw

Art- Nr. art. no.	Material material			\varnothing Innen inside	Bohrung borehole
10 90 30 00	A2	80	6	34	8,5
10 90 17 00	A2	100	6	43	11



Schweißbronde I welding plates

für Rundrohr, Korn 240, einseitig geschliffen
for round tube, finish 240, one side brushed

Art- Nr. art. no.	Material material			\varnothing Innen inside	Bohrung borehole
10 90 95 00	A2	100	6	42,8	11

Schweißbronde I welding plates

für Rundstab, roh
for round bar, raw

Art- Nr. art. no.	Material material			\varnothing Innen inside	Bohrung borehole
10 90 16 00	A2	64	4	12	6,5

Geländerteile aus VA / Ronden, Ankerplatten, Laschen

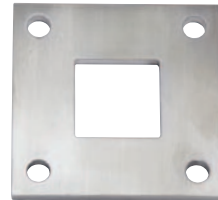
VA railing components / round plates, anchor plates, brackets



Schweißbronde I welding plates

Korn 240, einseitig geschliffen
finish 240, one side brushed

Art- Nr. art. no.	Material material			Bohrung borehole	
10 80 00 00	A2	60	4	6,5	43
10 80 12 00	A2	70	6	11	46
10 80 01 00	A2	80	4	11	50
10 80 02 00	A2	100	6	11	75
10 55 41 00	A4	100	6	11	75
10 80 03 00	A2	120	6	11	90



Schweißbronde I welding plates

Korn 240, einseitig geschliffen
finish 240, one side brushed

Art- Nr. art. no.	Material material		
10 80 13 00	A2	33	4
10 80 14 00	A2	42	4
10 80 15 00	A2	48	4
10 80 16 00	A2	60	4
10 80 17 00	A2	70	6
10 55 48 00	A4	70	6
10 80 10 00	A2	80	4
10 80 11 00	A2	100	6

Schweißbronde I welding plates

Für Vierkantrrohr, Korn 240, einseitig geschliffen
for square tube, finish 240, one side brushed

Art- Nr. art. no.	Material material				Bohrung borehole
10 80 18 00	A2	95 x 95	6	40 x 40	11

Geländerteile aus VA / Ronden, Ankerplatten, Laschen

VA railing components / round plates, anchor plates, brackets



Ankerplatte I anchor plate

Korn 240, einseitig geschliffen
finish 240, one side brushed

Art- Nr. art. no.	Material material			Bohrung borehole
10 80 19 00	A2	120 x 80	6	11 x 20

Ankerplatte I anchor plate

Korn 240, einseitig geschliffen
finish 240, one side brushed

Art- Nr. art. no.	Material material			Bohrung borehole
10 80 09 00	A2	120 x 60	6	11 x 20



Ankerplatte I anchor plate

Korn 240, einseitig geschliffen
finish 240, one side brushed

Art- Nr. art. no.	Material material			Bohrung borehole
10 80 08 00	A2	100 x 50	6	11



Geländerteile aus VA / Ronden, Ankerplatten, Laschen

VA railing components / round plates, anchor plates, brackets



Anschweißlasche | welding bracket

Korn 240
finish 240

Art- Nr. art. no.	Material material		Bohrung borehole
10 90 14 00	A2	50 x 30 5	9
10 90 48 00	A2	30 x 20 5	7

Anschweißlasche | welding bracket

Korn 240
finish 240

Art- Nr. art. no.	Material material		Bohrung borehole
10 90 15 00	A2	50 x 30 5	9 x 20



Abdeckrosette | cover plate

gewölbt, Korn 320
beveled, finish 320

Art- Nr. art. no.	Material material		H	Ø Innen inside
10 20 01 00	A2	105	25	43

Abdeckrosette | cover plate

Korn 320
finish 320

Art- Nr. art. no.	Material material		H	Ø Innen inside
10 20 02 00	A2	85	15	34,5
10 20 06 00	A2	85	15	43,0
10 20 03 00	A2	105	25	43,0
10 55 43 00	A4	105	15	43,0
10 20 10 00	A2	129	25	43,0
10 20 11 00	A2	129	25	49,0
10 20 04 00	A2	105	25	49,0

BEST by
QUALITY **DM**

Geländerteile aus VA / Ronden, Ankerplatten, Laschen

VA railing components / round plates, anchor plates, brackets

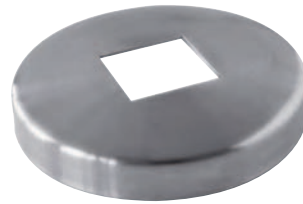


BEST by
QUALITY **DM**

Abdeckrosette | cover plate

Korn 320
finish 320

Art- Nr. art. no.	Material material	↔	H	∅ Innen inside
10 20 05 00	A2	45	12	12,5
10 20 00 00	A2	70	12	12,5
10 20 07 00	A2	76	12	12,5



Abdeckrosette | cover plate

für Vierkantrohr, Korn 320
for square tube, finish 320

Art- Nr. art. no.	Material material	↔	H	∅ Innen inside
10 56 14 00	A4	105	15	40 x 40



Abdeckrosette | cover plate

für Vierkantrohr, Korn 320
for square tube, finish 320

Art- Nr. art. no.	Material material	↕	H	∅ Innen inside
10 30 59 01	A2	108 x 108	25	40 x 40